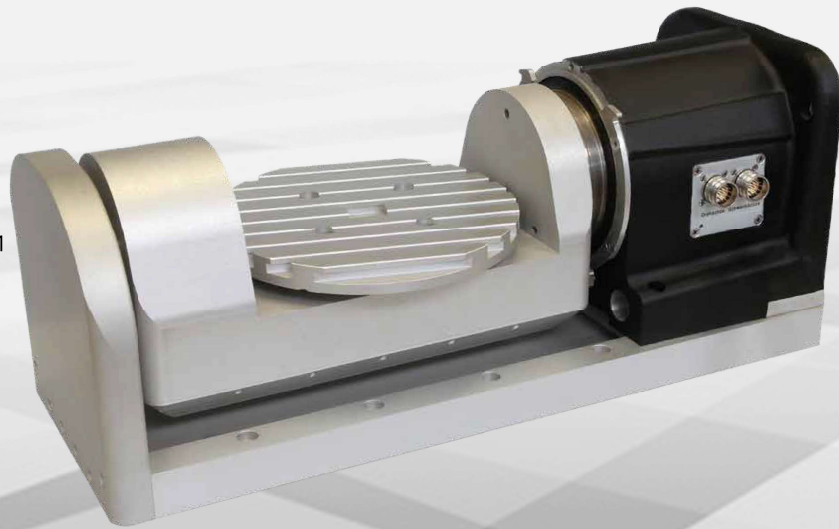




# Rotary swivel unit type DSH-M

- Equipped with precision gear
  - heavy duty and stiff output bearing
  - Clearance-free and high torsional rigidity
- equipped with rotary axis type RDH-M
- Reduction ratio of 1:51 oder 1:101
- Stepping or servo motor
- Degree of protection IP 65
- Stainless construction
- Transmission accuracy < 1 arcmin
- Repeatability < ±6 arcsec
- Maintenance-free
- Infinitely adjustable swivel range



### Order key

26542X X000

#### Engines

- 5 = stepping motor type MS 200 HT
- 6 = brushless EC servo motor EC 60TM

#### Gear reduction ratio

- 0 = 1 : 101
- 1 = 1 : 51

### Accessories



**Clamping chuck**  
3-jaw chuck Ø 125  
Itemno.: 269063 2125\*

\*including flange



**Aluminum T-slot plate**  
Ø 240 mm / PT 25  
Itemno.: 269050 0240

Ø 365 mm / PT 25  
Itemno.: 269050 0365



**Technical data**

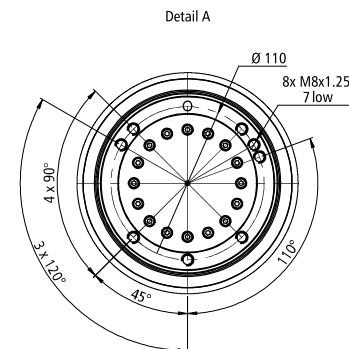
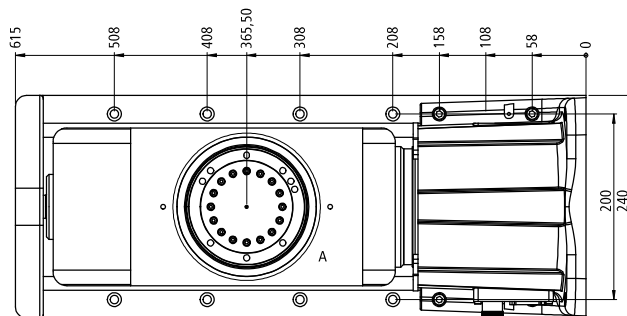
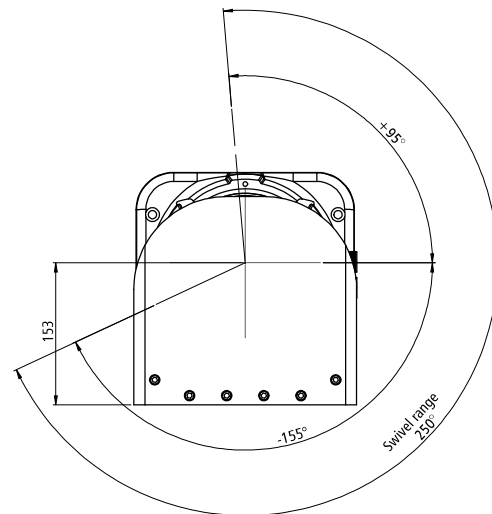
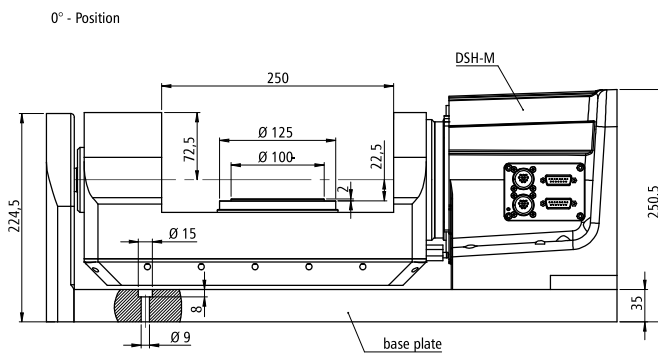
**Stepping motor  
MS 200HT\***

**EC servo motor  
EC 60TM**

Reduction ratio of gear	1:51	1:101	1:51	1:101
Nominal output speed [1/min]	4	2	20	10
	at 1,500 Hz (225 1/min)		at 1,000 1/min	
Max. Output speed [1/min]	24	12	78	40
	at 8,000 Hz		at 4,000 1/min	
Rated torque [Nm]	24	46	20	38
	at 1,500 Hz		-	
Max. torque (for a short term) [Nm]	-	-	42	80
Nominal holding torque (static load) [Nm]	55	108	26	51
Max. load capacity of the gearbox [Nm]	98	157	98	157
	Limit for repeatable peak torque			
Dynamic load rating C [N]	21800			
Static load rating $c_0$ [N]	35800			
Weight [kg]				

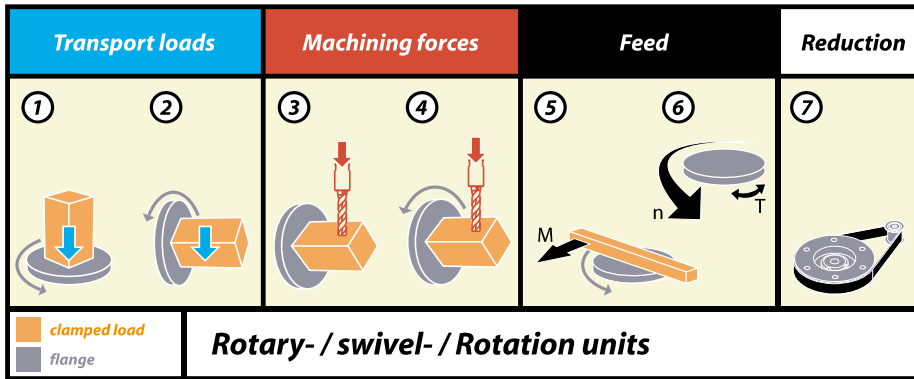
\*Values for the half-step mode

**Dimensional drawings**





# Transport loads, machining forces, feed



Rotating and/or swiveling units	1*	2*	3	4	5	6	7
RDH-M (step)	100 kg	45 kg	55 Nm	24 Nm	24 Nm	4 rpm	1:51
RDH-M (step)	160 kg	70 kg	108 Nm	45 Nm	45 Nm	2 rpm	1:101
RDH-M (brushless EC servo)	110 kg	50 kg	26 Nm	9 Nm	9 Nm	22 rpm	1:51
RDH-M (brushless EC servo)	180 kg	80 kg	51 Nm	17 Nm	17 Nm	11 rpm	1:101
RDH-S (step)	30 kg	15 kg	7 Nm	7 Nm	7 Nm	4 rpm	1:51
RDH-S (step)	48 kg	24 kg	11 Nm	11 Nm	11 Nm	2 rpm	1:101
RDH-M (brushless EC servo)	30 kg	15 kg	7 Nm	4.6 Nm	4.6 Nm	22 rpm	1:51
RDH-M (brushless EC servo)	48 kg	24 kg	11 Nm	4.6 Nm	9.2 Nm	11 rpm	1:101
RDH-S (DC servo)	25 kg	13 kg	7 Nm	4.6 Nm	4.6 Nm	22 rpm	1:51
RDH-S (DC servo)	40 kg	20 kg	11 Nm	8.7 Nm	8.7 Nm	11 rpm	1:101
RDH-XS (step)	30 kg	10 kg	5 Nm	5 Nm	5 Nm	24 rpm	1:50
RDH-XS (step)	30 kg	10 kg	7 Nm	7 Nm	7 Nm	12 rpm	1:100
RDH-M (brushless EC servo)	30 kg	10 kg	5 Nm	5 Nm	5 Nm	59 rpm	1:50
RDH-M (brushless EC servo)	30 kg	10 kg	7 Nm	7 Nm	7 Nm	30 rpm	1:100
RDH-XS (DC servo)	30 kg	10 kg	5 Nm	5 Nm	5 Nm	70 rpm	1:50
RDH-XS (DC servo)	30 kg	10 kg	7 Nm	7 Nm	7 Nm	35 rpm	1:100
MD 1 (step)	5 kg	2.5 kg	14 Nm	8 Nm	8 Nm	60 rpm	1:20
MD 1 (DC servo)	6 kg	3 kg	3.9 Nm	3 Nm	3 Nm	175 rpm	1:20
MD 1 (brushless EC servo)	6 kg	3 kg	4 Nm	3.2 Nm	3.2 Nm	150 rpm	1:20
ZR 20 (step)	10 kg	5 kg	10 Nm	8 Nm	8 Nm	60 rpm	1:20
ZD 30 (step)	14 kg	8 kg	15 Nm	12 Nm	12 Nm	40 rpm	1:30

\*Guide values varying according to the application