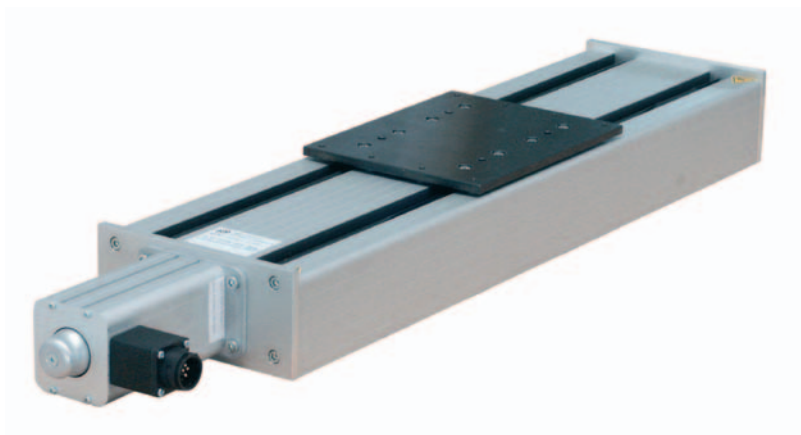


# Double-Track Feed Unit 1

# LES 1



## Features

- precision feed units from L = 300 up to L = 1,500 mm
- clearance-free feed devices with stepping motors
- NC coupling via a 15-pole amphenol plug on the stepping motor
- ball spindle drive 16 x 5 mm with four flange bearings
- repeatability  $\pm 0.01$  mm (reproducibility)
- clamping surfaces L 220 x B 175 x H 8 mm, with holes
- face-milled surfaces, accuracy  $< 0.05$  mm
- great stiffness and high load capacity due to eight linear bearings
- lip seal with teflon coat
- limit and/or reference position at 5 mm pitch  $> 0.0125$  mm
- Options:
  - feed from 75 to 1,250 mm ( $\varnothing 25$ mm)
  - pitches: 2.5/4/10 and 20 mm

The double-track feed unit 1 from isel is available in closed design with stepping motor and ball screw drive up to a length of 1.5 metre.

The feed units consist of aluminium rectangular profiles (W 175 x H 30 mm) in different lengths with two double-track feed guides. On the top of it, a clearance-free and torsion-resistant precision feed with eight clearance-free linear ball bearings is mounted

The feed has a face-milled clamping surface (L 220 x W 175 x H 8 mm) with clamping and centre holes. Two eight-millimetre thick aluminium covers serve as fixing elements for the flange bearing and the stepping motor.

The stepping motor drive consists of a stepping motor with coupling, hand wheel and limit switch. The stepping motor drives a clearance-free ball screw drive (16 x 5 mm) with a repeatability of  $\pm 0.01$  mm (reproducibility).  
Stroke = L - 243 mm.

# Double-Track Feed Unit 1

# LES 1

## Ordering Data



### Double-Track Feed Unit 1

- with ball spindle drive 16 x 5 mm

Item no.	Length (mm)
230 601 0300	300
230 601 0400	400
230 601 0500	500
230 601 0600	600
230 601 0700	700
230 601 0850	850
230 601 1000	1000
230 601 1100	1100
230 601 1250	1250
230 601 1350	1350
230 601 1500	1500



### Double-Track Feed Unit 1

- epping motor ball screw drive 16 x 5 mm

Item no.	Length (mm)
230 101 0300	300
230 101 0400	400
230 101 0500	500
230 101 0600	600
230 101 0700	700
230 101 0850	850
230 101 1000	1000
230 101 1100	1100
230 101 1250	1250
230 101 1350	1350
230 101 1500	1500



### Double-Track Feed Unit 1

- without ball screw drive

Item no.	Length (mm)
230 201 0300	300
230 201 0400	400
230 201 0500	500
230 201 0600	600
230 201 0700	700
230 201 0850	850
230 201 1000	1000
230 201 1100	1100
230 201 1250	1250
230 201 1350	1350
230 201 1500	1500

## Scale Drawings

